

ARRETE

Portant classement d'une zone agricole protégée sur les communes de Boigny-sur-Bionne et Marigny-les-Usages

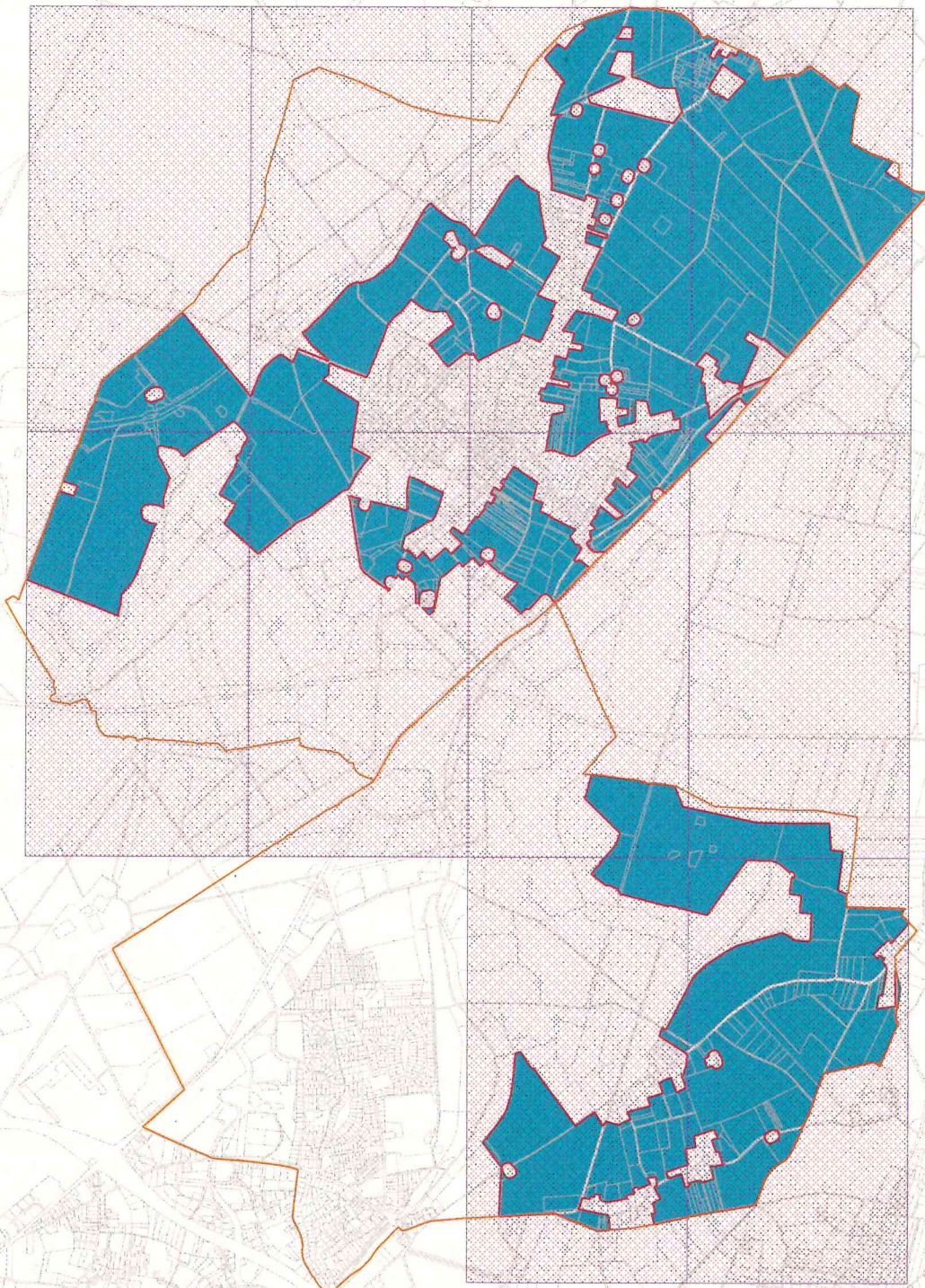
ANNEXE
plans de zonage de la ZAP

Vu pour être annexé à l'arrêté préfectoral
en date de ce jour.
17 NOV. 2025
ORLEANS, le

La préfète,
pour la préfète et par délégation,
le secrétaire général,








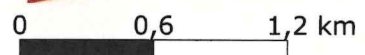
Nicolas HONORE

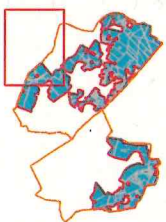


**Zone Agricole Protégée
Boigny-sur-Bionne et Marigny-les-Usages**





Plan d'assemblage

-  Grille
-  Limites communales
-  Périmètre retenu pour la ZAP
-  Parcelles cadastrales dans la ZAP
-  Parcelles cadastrales





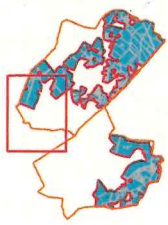
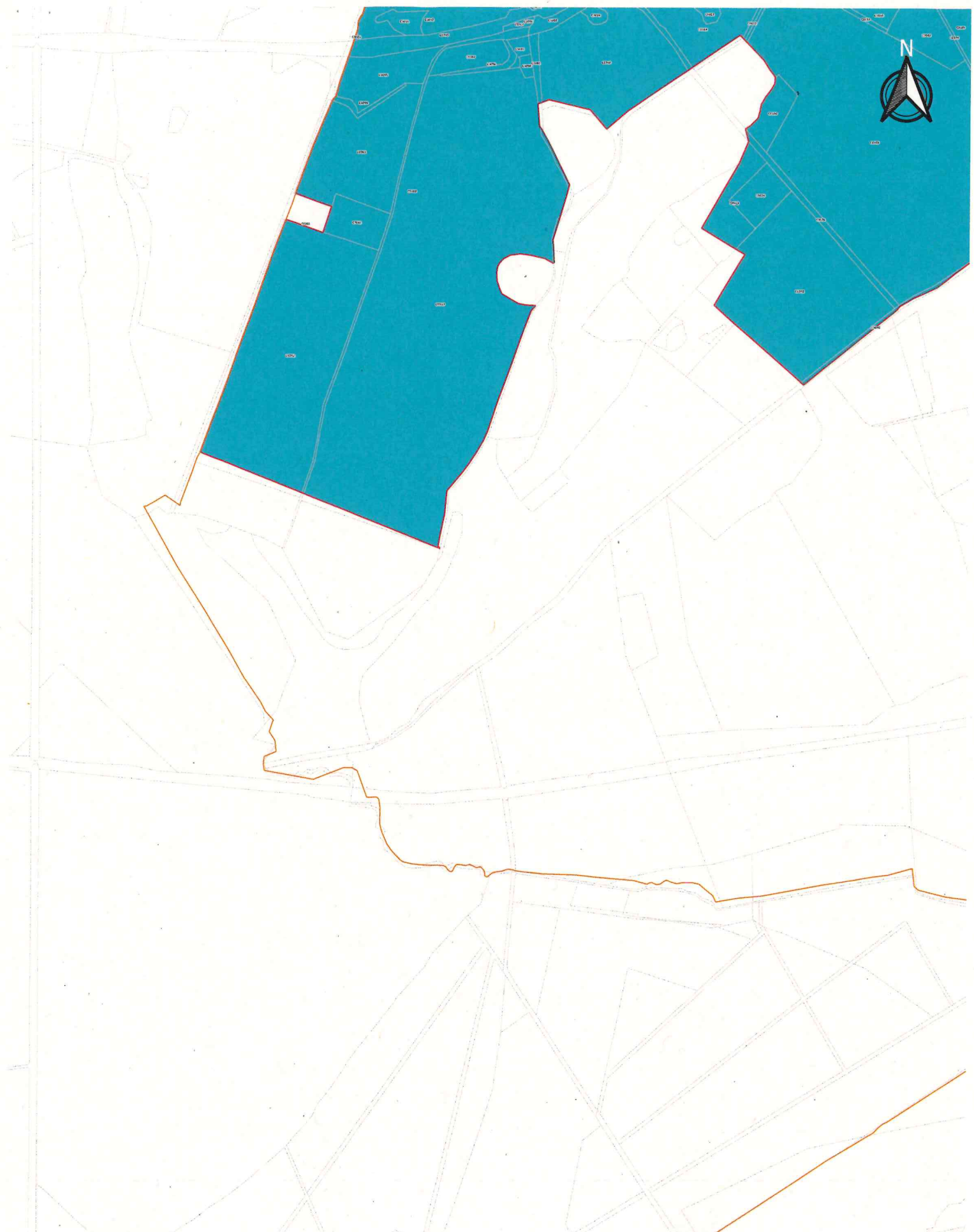
**Zone Agricole
Protégée
Boigny-sur-Bionne
et Marigny-les-Usages**

-  Limites communales
-  Périmètre retenu pour la ZAP
-  Parcelles cadastrales dans la ZAP
-  Parcelles cadastrales







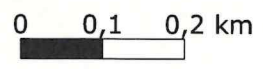
0 0,1 0,2 km

Réalisation CAUE - Septembre 2016
Sources: BD TOPO IGN, 2011 / BD CARTEO IGN,
2012 / Données cadastrales DGFV, 2012

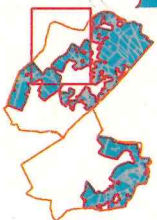
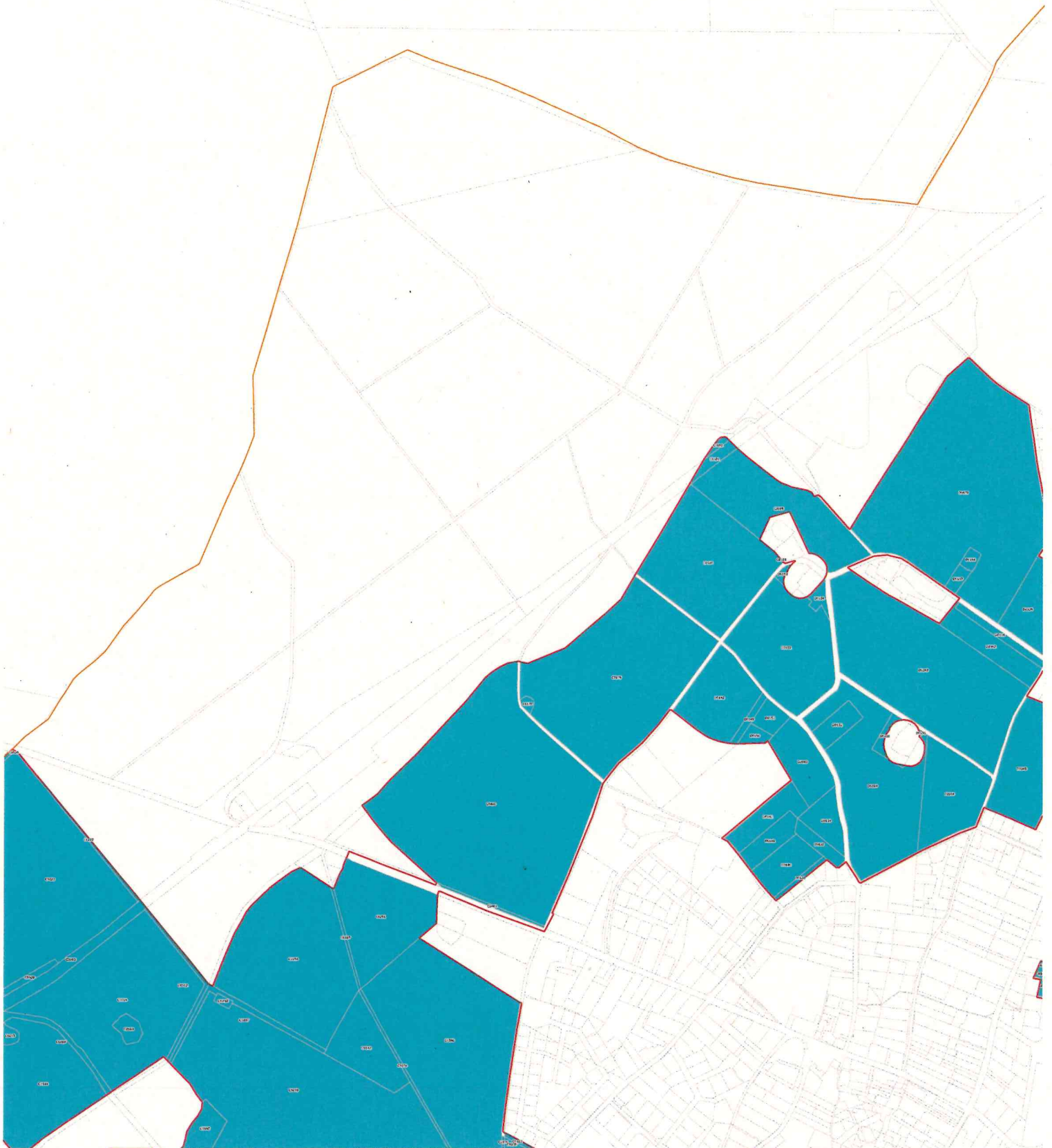


**Zone Agricole Protégée
Boigny-sur-Bionne
et Marigny-les-Usages**





-  Limites communales
-  Périmètre retenu pour la ZAP
-  Parcelles cadastrales dans la ZAP
-  Parcelles cadastrales



Rédaction CAUE - Septembre 2024
Sources: BD TOPO 2010, 2011 / BD OREHO IGN, 2011 / Données cadastrales DDT9, 2022



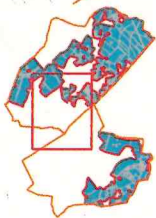
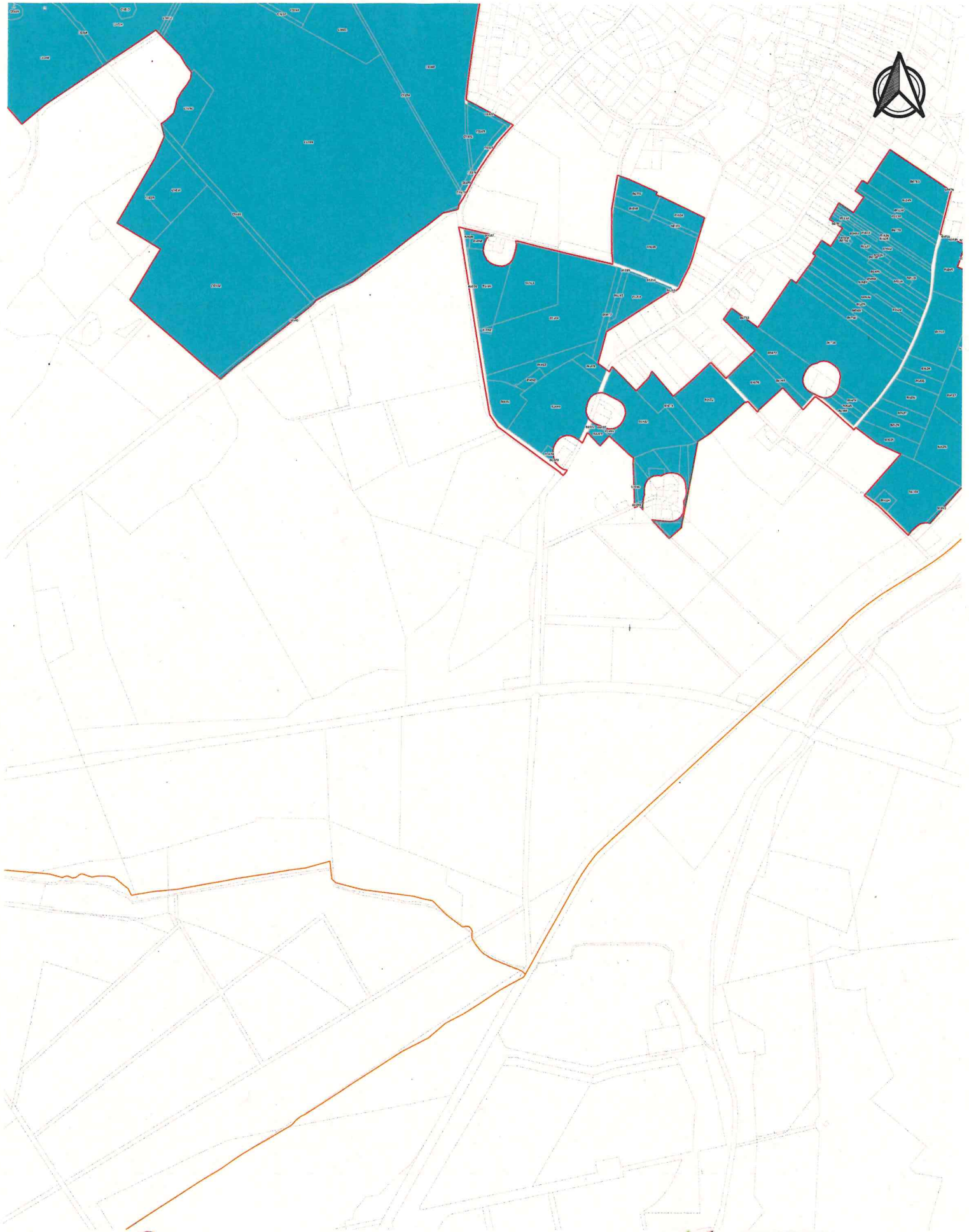
**Zone Agricole
Protégée
Boigny-sur-Bionne
et Marigny-les-
Usages**

-  Limites communales
-  Périmètre retenu pour la ZAP
-  Parcelles cadastrales dans la ZAP
-  Parcelles cadastrales







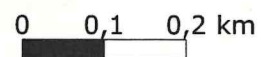
0 0,1 0,2 km

Réalisation CAUE - Septembre 2024
Sources: BD TOPO 2024, IGN / SD Océano 2024 / Données cadastrales DDTF, 2022

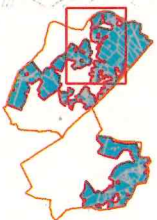


**Zone Agricole
Protégée
Boigny-sur-Bionne
et Marigny-les-
Usages**





-  Limites communales
-  Périmètre retenu pour la ZAP
-  Parcelles cadastrales dans la ZAP
-  Parcelles cadastrales

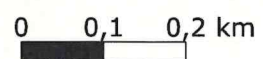


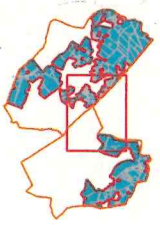
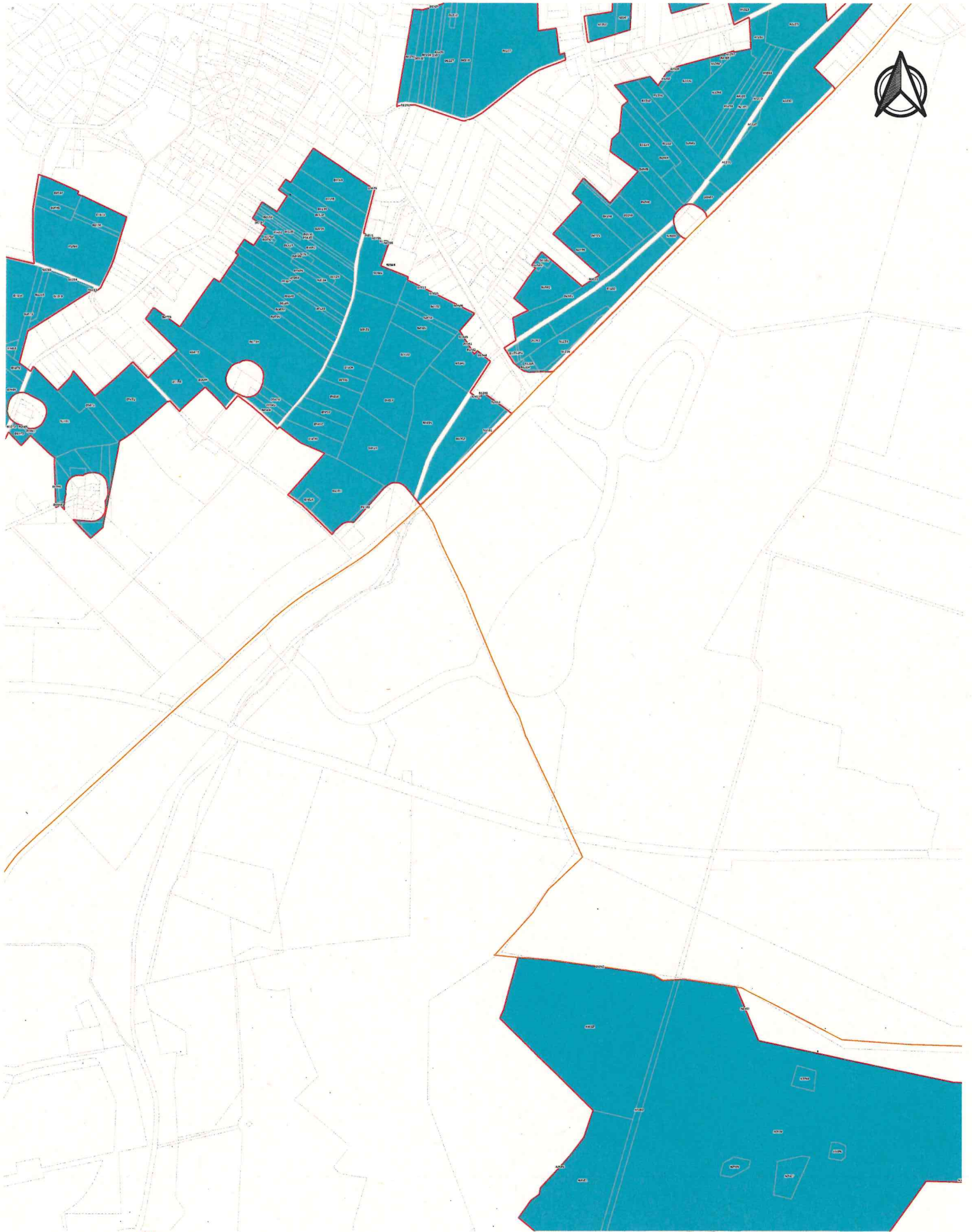
Réalisation CAES - Septembre 2024
Sources: BD TOPO IGN, 3001 / BD OUVRIER IGN,
2021 / Données cadastrales DGFIP, 2011







**Zone Agricole
Protégée
Boigny-sur-Bionne
et Marigny-les-
Usages**

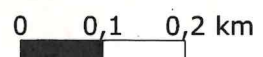
-  Limites communales
-  Périmètre retenu pour la ZAP
-  Parcelles cadastrales dans la ZAP
-  Parcelles cadastrales



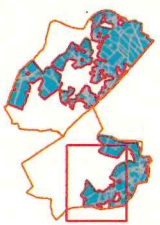
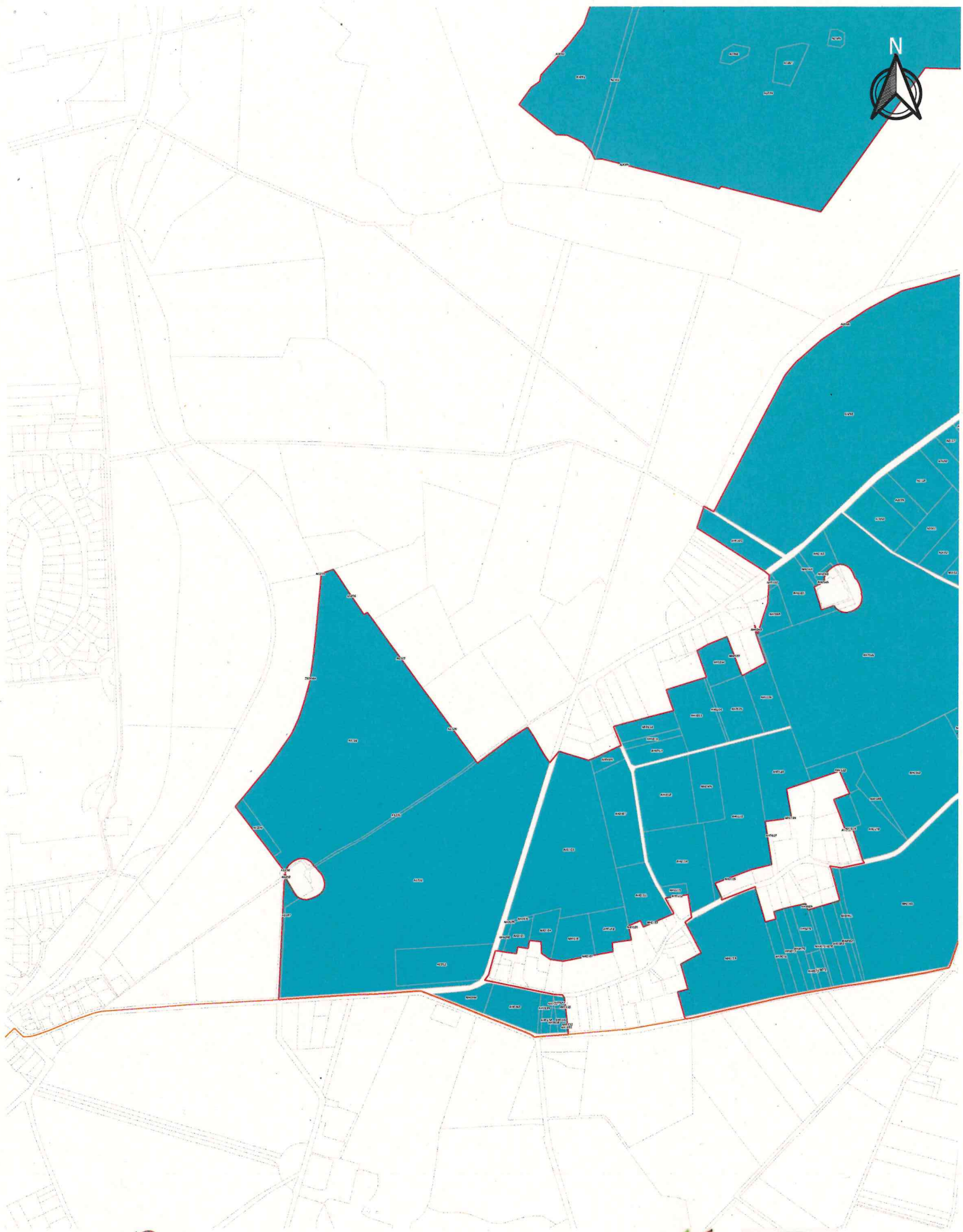


**Zone Agricole
Protégée
Boigny-sur-Bionne
et Maigny-les-
Usages**





-  Limites communales
-  Périmètre retenu pour la ZAP
-  Parcelles cadastrales dans la ZAP
-  Parcelles cadastrales

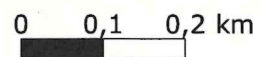


Rédaction CAUE - Septembre 2018
Sources : BD TOPO 2011, 2012 / IGN
2012 / Données cadastrales DG179, 2022

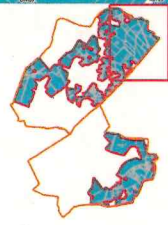
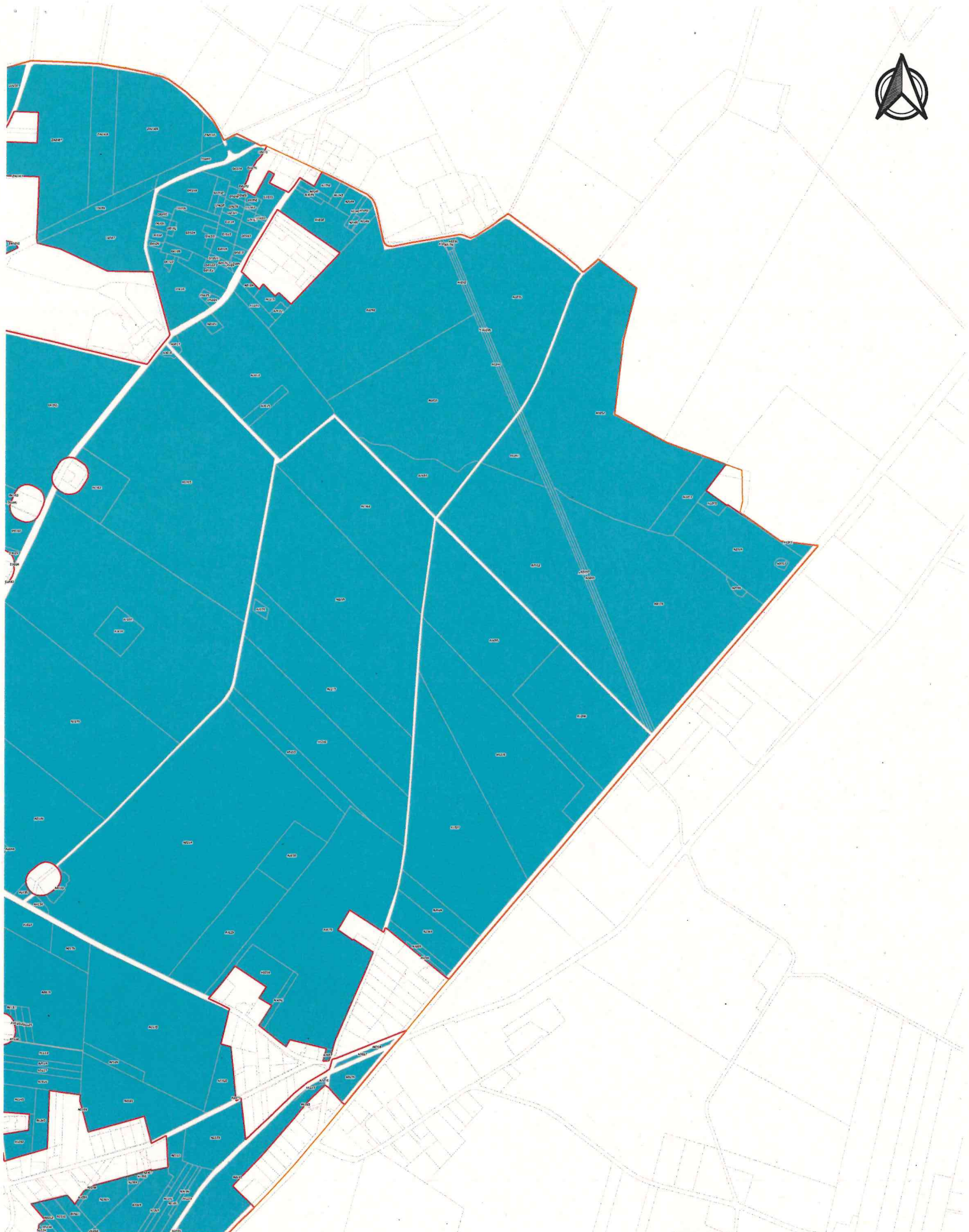


**Zone Agricole
Protégée
Boigny-sur-Bionne
et Marigny-les-Usages**





-  Limites communales
-  Périmètre retenu pour la ZAP
-  Parcelles cadastrales dans la ZAP
-  Parcelles cadastrales

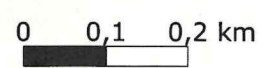


Marsatien CAS - Septembre 2014
Sources: BD Topo IGN, 2011 / IGN CHTRIO IGN,
2012 / Données cadastrales DGF19, 2012

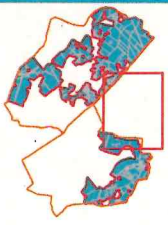


**Zone Agricole
Protégée
Boigny-sur-Bionne
et Marigny-les-
Usages**





-  Limites communales
-  Périmètre retenu pour la ZAP
-  Parcelles cadastrales dans la ZAP
-  Parcelles cadastrales

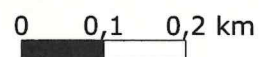


Mise à jour CAS - Septembre 2021
Sources: BD TOPO IGN, 2017 / BD OTHO IGN,
2022 / Données cadastrales DGFIS, 2012

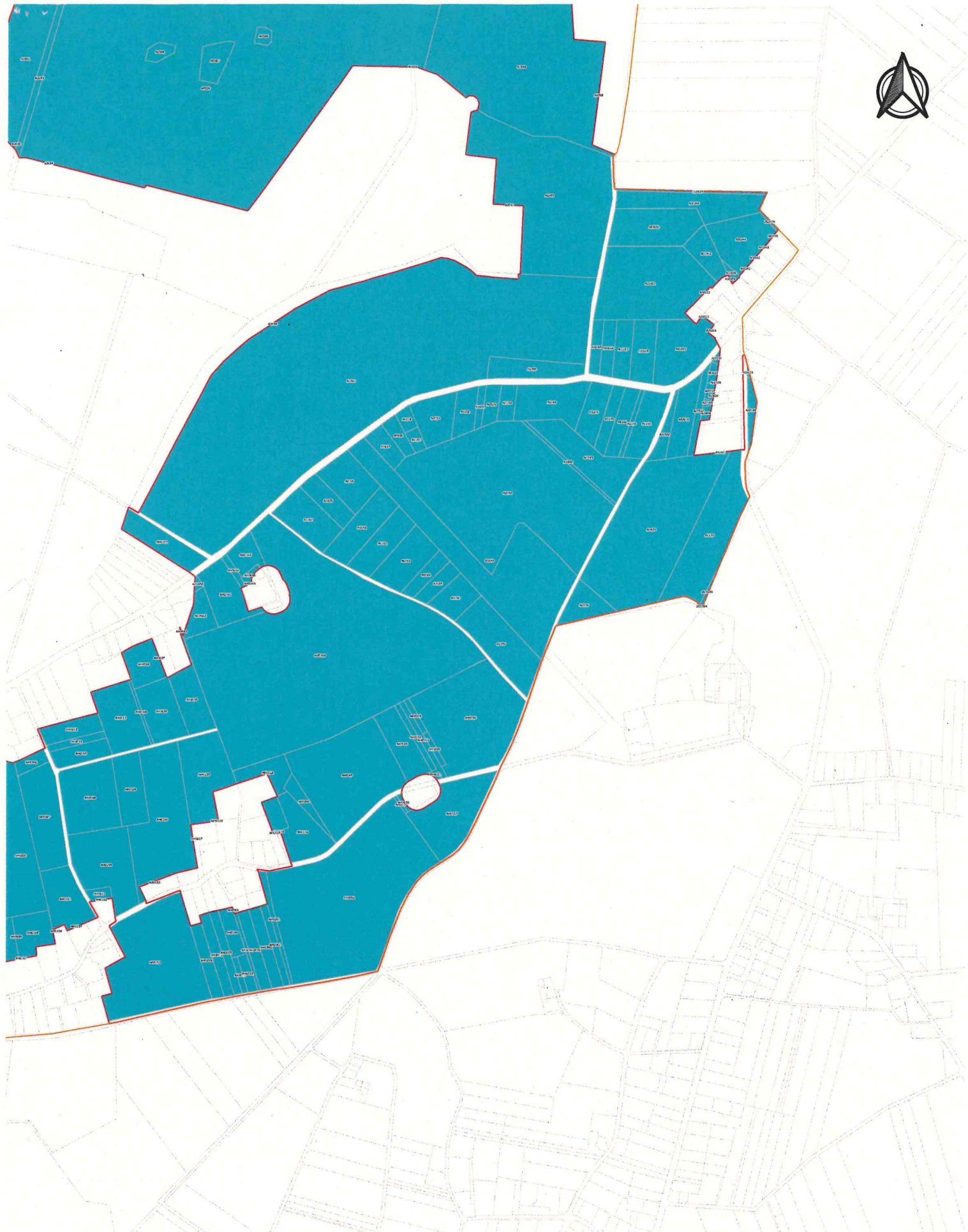


**Zone Agricole
Protégée
Boigny-sur-Bionne
et Marigny-les-
Usages**





-  Limites communales
-  Périmètre retenu pour la ZAP
-  Parcelles cadastrales dans la ZAP
-  Parcelles cadastrales



Rédaction CAIS - Septembre 2014
Source : SD TOPD IGN, 2011 / SD ORTHO IGN,
2012 / Données cadastrales DGFV, 2012



**Zone Agricole
Protégée
Boigny-sur-Bionne
et Marigny-les-
Usages**

-  Limites communales
-  Périmètre retenu pour la ZAP
-  Parcelles cadastrales dans la ZAP
-  Parcelles cadastrales



0 0,1 0,2 km

Mise à jour : 04/05/2021
Sources : BD TOPO 1024, 1021 / BD ORTHO 1024,
2021 / Données cadastrales DDTV, 2021